

# AirLogic™

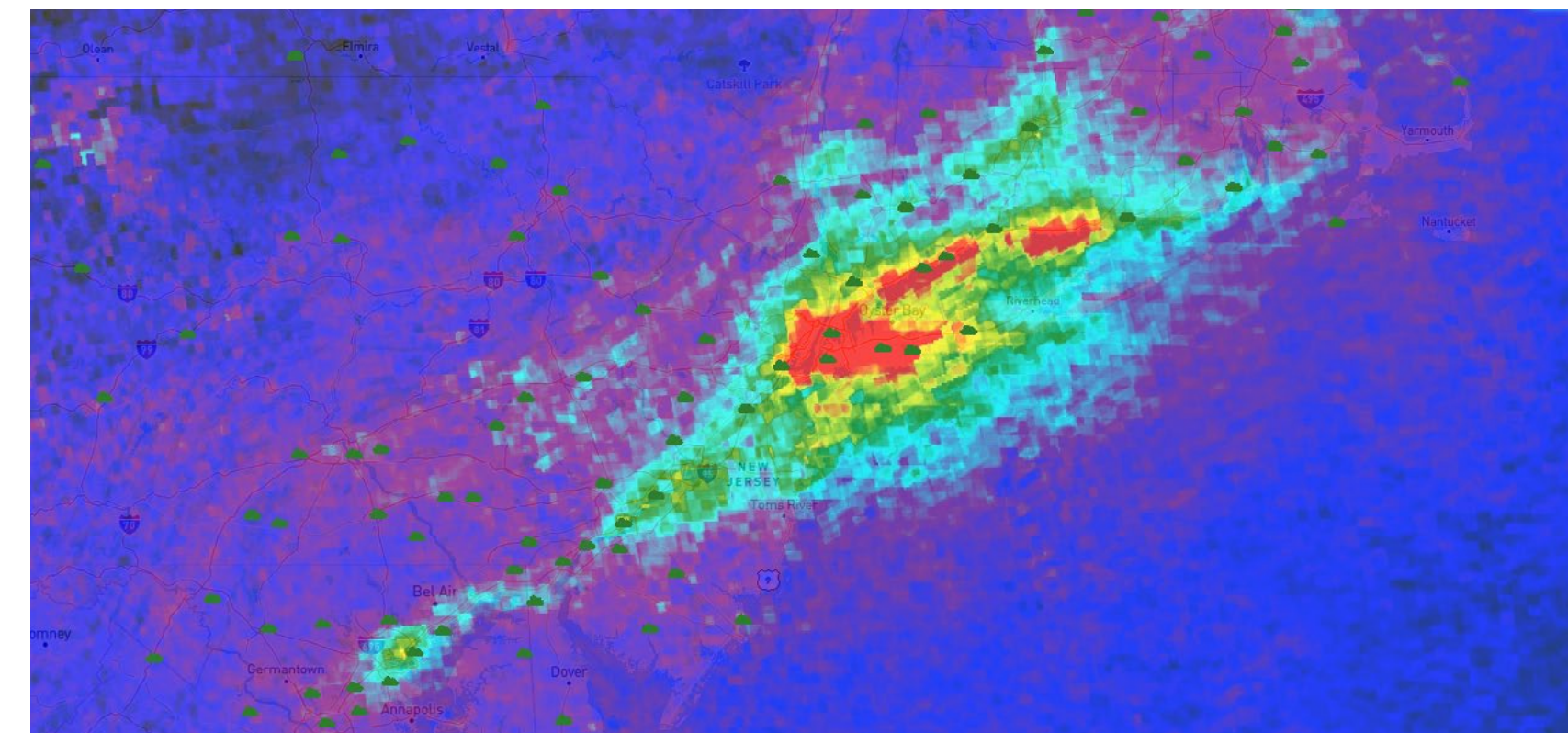
Measure. Monitor. Manage. Mitigate.

**ARE EMISSIONS COSTING YOUR OPERATIONS? MAKE BETTER DECISIONS FASTER, USING REAL-TIME EMISSIONS DATA WITH AIRLOGIC™.**

Across the globe, governments are tightening regulatory compliance specific to air pollutants and greenhouse gas (GHG) emissions. Not only is their focus on combating climate change and creating healthier communities, but they are aligning action with protocols like COP26 and the Paris Agreement.

From a sustainability or investor ESG perspective, companies are experiencing reputational risks associated with not actively managing or mitigating their emissions. At the same time, companies are beginning to understand the associated operational costs, including to their employee health and safety programs. Unaddressed, these components pose operational and governance risk.

*Our waste management client used AirLogic™ to identify and manage their GHG emission risk. The platform consolidated different types of emission monitoring data from multiple landfills. Typically, the data (surface emission monitoring, drone surveys, aircraft surveys, fixed sensor data) is collected in different ways and via different formats. AirLogic™ allowed out client to centralize multiple types of data into a single platform. This allowed them to compare landfill sites to each other, and look at the data as a trend in time to understand how each site was doing and where they were headed.*



*AirLogic™ displays imagery that detects the flow and intensity of airborne pollutants.*



Power Plant,  
Alberta Municipal Affairs  
Edmonton, Alberta, Canada



*AirLogic™ can track airborne dust from mining operations.*

## EFFECTIVE EMISSION MANAGEMENT – WHAT IS THE BENEFIT?

**So how do companies understand and address their emissions? How does action create operational efficiencies? How do companies manage operational and governance risk over the long term?**

**Stantec has partnered with BlueSky Resources to provide clients with the answers to these questions. Our partner application, AirLogic™, is the most responsive, innovative, technology-driven service desktop program—measure, monitor, manage and mitigate.**

### **Measure**

A great place for any company to start is identifying baseline data—taking the current pulse on company emissions. Critically important, this work pinpoints areas of concern, cost-saving opportunities, and a myriad of data sources needed to align with regulatory requirements

### **Monitor**

With any emissions program, data monitoring needs to become a key operational business component. Hourly/daily/weekly/quarterly/yearly monitoring identifies changes or unusual activity, allows for faster decision making, shows progress on reduction programs, and reports against baseline data.

### **Manage**

By monitoring emission data frequently, operations can prioritize, developing short and long-term planning strategies and solutions to manage—creating operational efficiencies, and reducing associated costs and risk.

### **Mitigate**

Often to meet regulatory and ESG related requirements, there is a need to mitigate current emission levels. In measuring, monitoring, and managing this data, operations can develop solid plans to implement operational changes, including swapping out equipment, scaling programs across multiple sites/operations, or changing internal practices. These actions contribute to a cleaner atmosphere, can address regulatory requirements, and create cost savings.



***AirLogic™ gives our clients near real-time, quantitative information that will better enable critical decision-making for regulatory compliance and operations management. The speed and level of insight is creating a new industry standard.***

**MARSHALL DAVERT**  
STANTEC'S CHIEF INNOVATION OFFICER



***Our proprietary system creates a vast dataset using multiple sources, including a network of independent, public, commercial and private sources. This multi-data source approach provides the most timely and accurate emission and airborne pollutant data available.***

**BUD POPE**  
FOUNDER OF BLUESKY RESOURCES

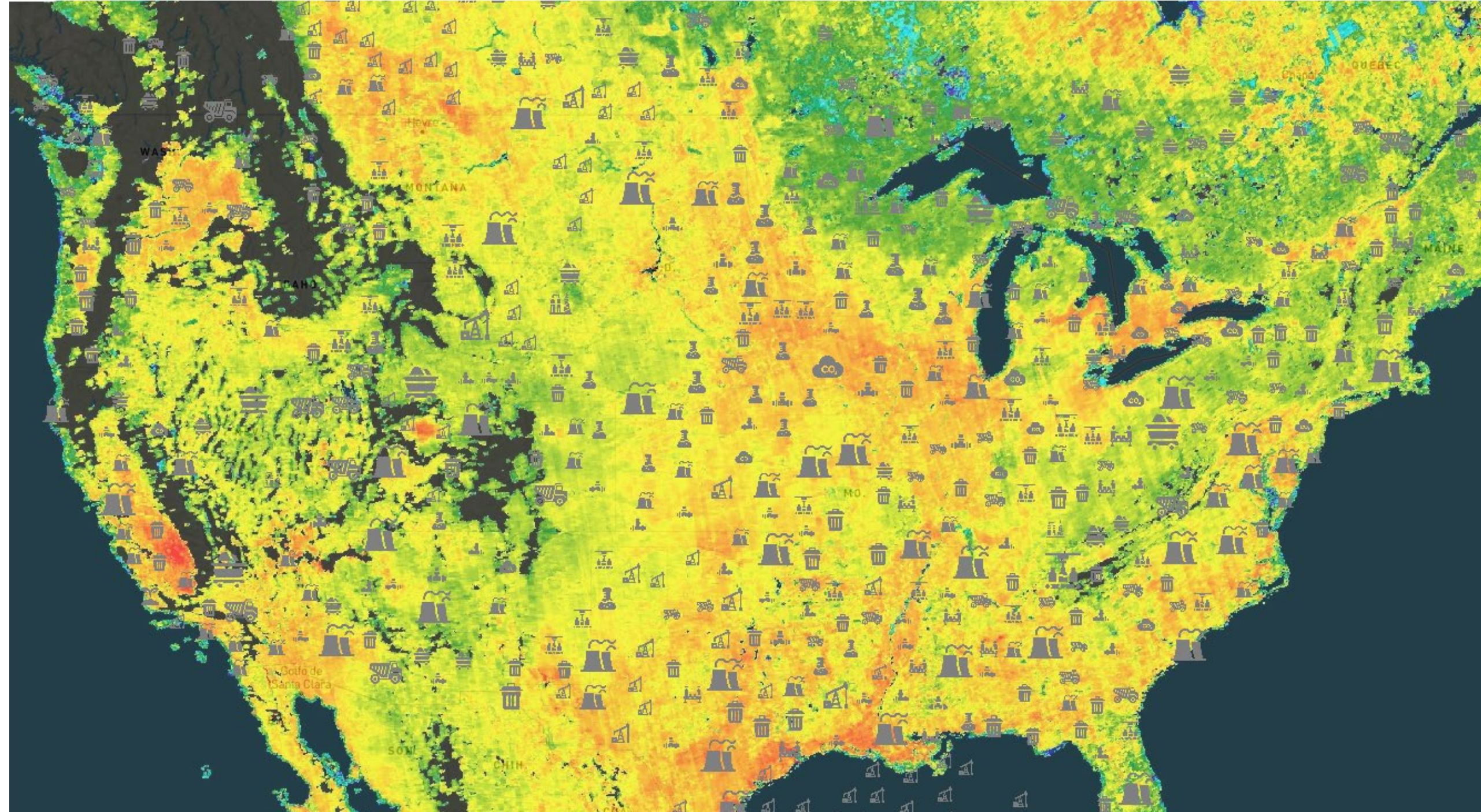


*AirLogic™ monitors airborne emission levels from manufacturing facilities.*



## INDUSTRIES AIRLOGIC™ SUPPORTS

- Agriculture
- Manufacturing
- Mining
- Oil & Gas
- Power
- Waste Management



*The AirLogic™ intuitive visual interface is easy to navigate and understand sensor data from multiple sources for visualization, modelling and analysis. Imagery Courtesy: GHGSat 2021*

### What is AirLogic™?

Delivering a comprehensive view of sensor and measurement data specific to a site or location, AirLogic™ creates a single-source dashboard with hourly, daily, weekly, quarterly, and yearly views of emissions and concentrations for targeted facilities. This supports short and long-term monitoring and mitigation efforts, including establishing operational efficiencies. Accessed from your desktop and at a fraction of the cost; the AirLogic™ portal consolidates customer-specific curated data, including ground sensors, regional sensors, and satellite sensor data in one place.

Using the Rosetta Dashboard, clients can easily integrate and visualize measurements from multiple sensors in one place, customizing their information based on what is most critical and relevant to them. Custom alerts swiftly notified of unusual, emerging conditions around facilities, allowing for quicker response time to these conditions. Map-based and graphical data visualization solutions include roll-up reporting tailored to each company on individual and unique timescales. Findings and strategies from key sites can also provide a foundation for use at additional locations.



## WE CAN HELP YOU

AirLogic™ is an integral part of monitoring and mitigating your emissions program.

Fully aware: track air pollutants and GHG's with near real-time data

BlueSky Resources

## CONTACT US

Email us at [AirLogic@stantec.com](mailto:AirLogic@stantec.com) to learn more about AirLogic™

Our AirLogic™ experts:

Kevin Madry,  
Stantec, Senior Principal

Reid Person,  
Stantec, Principal

Peter Miller,  
Stantec, Senior Principal

Bud Pope,  
BlueSky Resources, Founder

## CONNECT WITH US



STANTEC.COM